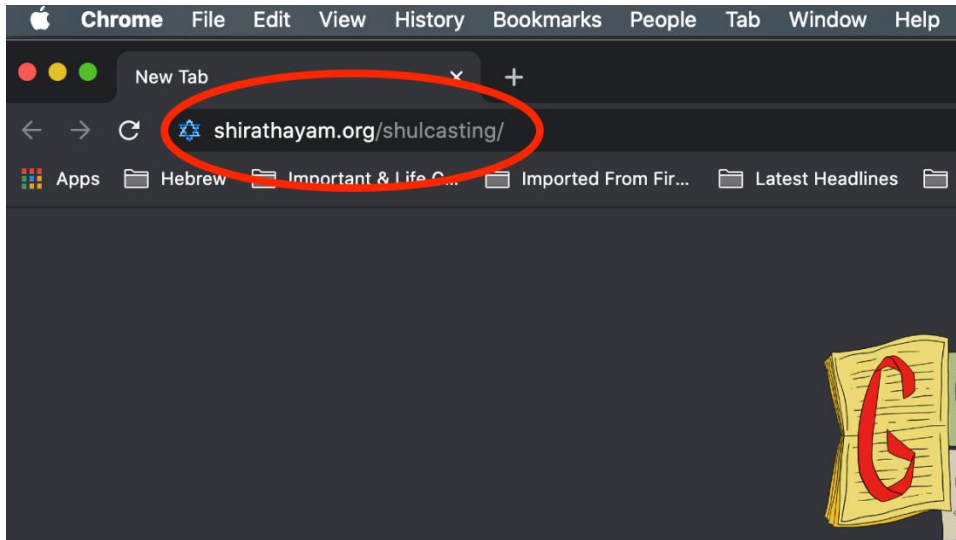


Live Streaming User Guide

PART 1 - Normal Operation

Step 1 – Type shirathayam.org/shulcasting into your browser and press <return>.



Step 2 – Confirm you've reached this page



Step 3 – Scroll down to StreamSpot and if the service is **Live**, press Play.

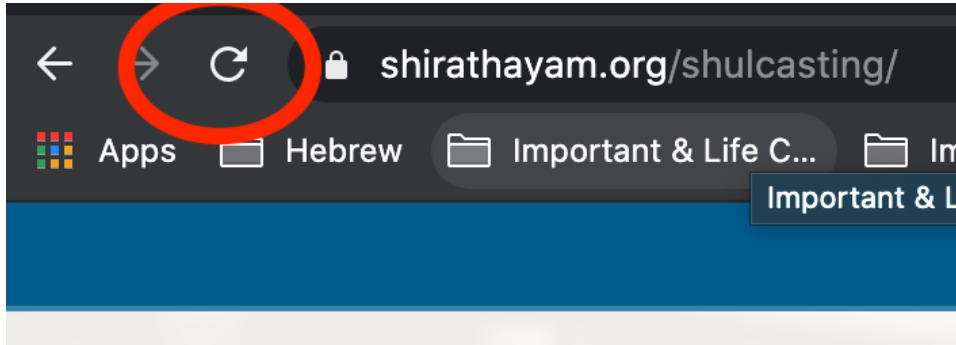


If the service is NOT LIVE, it will look like this. Notice that the red "Live" is missing from the upper left corner. See PART 2.

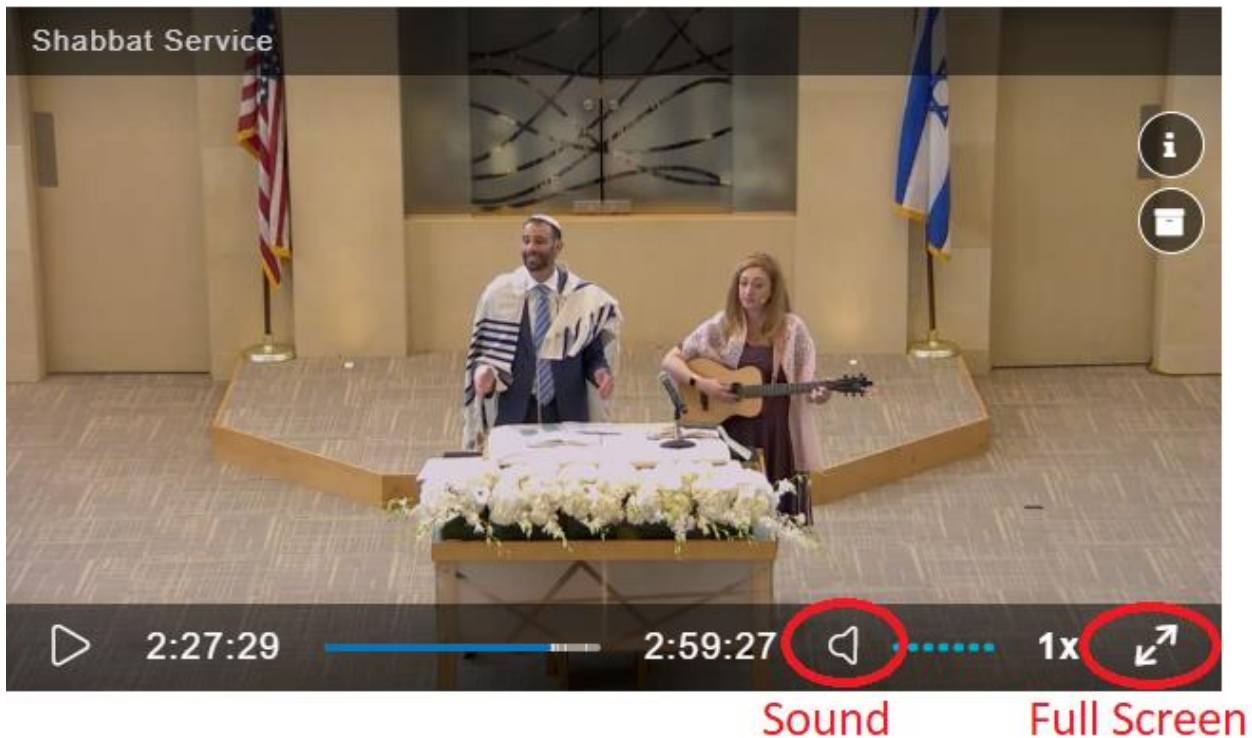


PART 2 – Service is NOT LIVE

Step 1 – When the service is scheduled to start, Reload the webpage. On my browser (Chrome) that's either Control-R, Command-R, or press the Reload button. If you reach shirathayam.org/shulcasting BEFORE the service is “Live,” you MUST Reload the page. Then, go back to PART 1, Step 3 above.



CONTROLS



Use the sound icon to control the volume. Use the full screen icon to view in full screen. Press [esc] to exit full screen. For more StreamSpot player controls, see <https://support.streamspot.com/hc/en-us/articles/217135837-StreamSpot-Player-Controls>.

TROUBLESHOOTING

Issue 1 - The broadcast has not yet started.



When the service is scheduled to start, Reload the page (PART 2, Step 1). Now that the service is live, press Play (Part 1, Step 3).

Issue 2 – The service has started, but you get the following message



This message, "This broadcaster is currently not streaming." appears when you go to shirathayam.org/shulcasting BEFORE the stream begins. Then the stream begins and you press Play, but you DID NOT Reload the page. To solve this issue, Reload the page (PART 2, Step 1). Now that the service is live, press Play (Part 1, Step 3).